

Accumulator Shells

Bottom Repairable

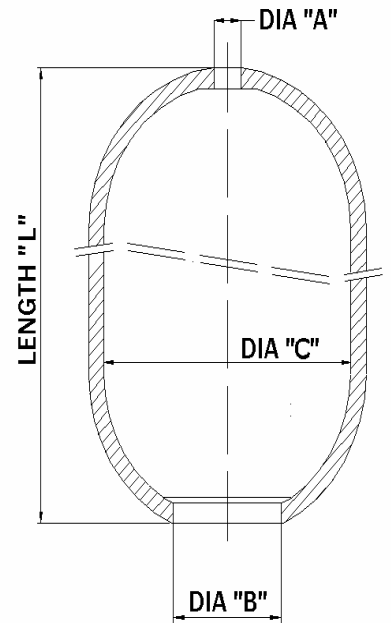
ASME/CE

Bladder Accumulator Spun Shells



Size	Part No.	DIA "A"	DIA "B"	DIA "C"	LENGTH "L"
1 Gal	3251029	0.875	2.750	6.00	10.80
2.5 Gal	3251030	0.875	3.500	8.00	15.50
5 Gal	3251031	0.875	3.500	8.00	27.50
10 Gal	3251032	0.875	3.500	8.00	48.25
11 Gal	3251033	0.875	3.500	8.00	54.13
15 Gal	3251034	0.875	3.500	8.00	72.00

- Cr-Mo Steel Spun Shells
- ASME Coded and U-Stamped
- CE Certified and Stamped for Module G
- National Board Registered
- ASME Rated @ 3000 PSI
- CE Rated @ 207 Bar
- Appendix 22 available upon request
- Zinc Phosphate Coated
- Also available in Top Repairable
- Special Sizes available upon request



FLUID ENERGY CONTROLS, INC.

6431 FLOTILLA STREET
LOS ANGELES, CA 90040 USA
TEL:(323) 721-0588
FAX:(323) 721-8368
E-MAIL: sales@fecintl.com